



## Test Report

No.: GZ0904033828/CHEM

Date: APR 30, 2009

Page 1 of 6

SHENZHEN MEIXING CHEMICAL CO., LTD  
ROOM502 WEST OF NEW BUS STATION, SONGGANG STREET, BAOAN DISTRICT, SHENZHEN CHINA

The following sample(s) was/were submitted and identified on behalf of the applicant as Plastic Colorist

SGS Job No. : SZ11774843  
SGS Internal Reference No. : 32.12  
Client Reference Information : PLEASE SEE ATTACHMENT  
Buyer : SONY  
Date of Sample Received : APR 21, 2009  
Testing Period : APR 21, 2009 TO APR 30, 2009  
Test Requested : Selected test (s) as requested by client.  
  
Test Method : Please refer to next page(s).  
  
Test Result(s) : Please refer to next page(s).

Signed for and on behalf of  
SGS-CSTC Ltd.

Huang Fang, Sunny  
Sr. Engineer

This document is issued by the Company under its General Conditions of Service printed overleaf or available on request and accessible at [http://www.sgs.com/terms\\_and\\_conditions.htm](http://www.sgs.com/terms_and_conditions.htm). Attention is drawn to the limitation of liability, indemnification and jurisdiction issues defined therein. Any holder of this document is advised that information contained hereon reflects the Company's findings at the time of its intervention only and within the limits of Client's instructions, if any. The Company's sole responsibility is to its Client and this document does not generate parties to a transaction from exercising all their rights and obligations under the transaction documents. Any unauthorized alteration, forgery or falsification of the content or appearance of this document is unlawful and offenders may be prosecuted to the fullest extent of the law.  
Unless otherwise stated, the results shown in this test report refer only to the sample(s) tested. This document cannot be reproduced except in full, without prior approval of the Company.



SGS TESTING SERVICES Co., Ltd  
Guangzhou Standard Technical Laboratory

198 Kazhu Road, Sointech Park, Guangzhou Economic & Technology Development District, Guangzhou, China 510863 | (86-20) 82155555 | (86-20) 82075125 | www.cn.sgs.com  
中国·广州·经济技术开发区科学城科珠路198号 邮编: 510863 | (86-20) 82155555 | (86-20) 82075125 | e: sgs.china@sgs.com

Member of the SGS Group (SGS SA)



# Test Report

No.: GZ0904033828/CHEM

Date: APR 30, 2009

Page 2 of 6

### Test Results:

Description for specimen 1 : Black powder

### SS-00259

Test Item(s)	Unit	Test Method (Reference)	Result	MDL
Cadmium (Cd)	mg/kg	IEC 62321: 2008, ICP-OES	N.D.	2
Lead (Pb)	mg/kg	IEC 62321: 2008, ICP-OES	13	2
Mercury (Hg)	mg/kg	IEC 62321: 2008, ICP-OES	N.D.	2
Hexavalent Chromium (CrVI) by alkaline extraction	mg/kg	IEC 62321: 2008, UV-Vis	N.D.	2
Sum of PBBs	mg/kg	-	N.D.	-
Monobromobiphenyl	mg/kg	IEC 62321: 2008, GC-MS	N.D.	5
Dibromobiphenyl	mg/kg	IEC 62321: 2008, GC-MS	N.D.	5
Tribromobiphenyl	mg/kg	IEC 62321: 2008, GC-MS	N.D.	5
Tetrabromobiphenyl	mg/kg	IEC 62321: 2008, GC-MS	N.D.	5
Pentabromobiphenyl	mg/kg	IEC 62321: 2008, GC-MS	N.D.	5
Hexabromobiphenyl	mg/kg	IEC 62321: 2008, GC-MS	N.D.	5
Heptabromobiphenyl	mg/kg	IEC 62321: 2008, GC-MS	N.D.	5
Octabromobiphenyl	mg/kg	IEC 62321: 2008, GC-MS	N.D.	5
Nonabromobiphenyl	mg/kg	IEC 62321: 2008, GC-MS	N.D.	5
Decabromobiphenyl	mg/kg	IEC 62321: 2008, GC-MS	N.D.	5
Sum of PBDEs	mg/kg	-	N.D.	-
Monobromodiphenyl ether	mg/kg	IEC 62321: 2008, GC-MS	N.D.	5
Dibromodiphenyl ether	mg/kg	IEC 62321: 2008, GC-MS	N.D.	5
Tribromodiphenyl ether	mg/kg	IEC 62321: 2008, GC-MS	N.D.	5
Tetrabromodiphenyl ether	mg/kg	IEC 62321: 2008, GC-MS	N.D.	5
Pentabromodiphenyl ether	mg/kg	IEC 62321: 2008, GC-MS	N.D.	5
Hexabromodiphenyl ether	mg/kg	IEC 62321: 2008, GC-MS	N.D.	5
Heptabromodiphenyl ether	mg/kg	IEC 62321: 2008, GC-MS	N.D.	5
Octabromodiphenyl ether	mg/kg	IEC 62321: 2008, GC-MS	N.D.	5
Nonabromodiphenyl ether	mg/kg	IEC 62321: 2008, GC-MS	N.D.	5
Decabromodiphenyl ether ##	mg/kg	IEC 62321: 2008, GC-MS	N.D.	5

### Note:

1. mg/kg = ppm
2. N.D. = Not Detected (< MDL)
3. MDL = Method Detection Limit
4. ## = The exemption of DecaBDE in polymeric application according 2005/717/EC was overruled by the European Court of Justice by its decision of 01.04.2008. Subsequently DecaBDE is included in the sum of PBDE after 01.07.2008
5. "-" = Not regulated

This document is issued by the Company under its General Conditions of Service printed overleaf or available on request and accessible at [http://www.sgs.com/terms\\_and\\_conditions.htm](http://www.sgs.com/terms_and_conditions.htm). Attention is drawn to the limitation of liability, indemnification and jurisdiction issues defined therein. Any holder of this document is advised that information contained hereon reflects the Company's findings at the time of its intervention only and within the limits of Client's instructions, if any. The Company's sole responsibility is to its Client and this document does not generate parties to a transaction from exercising all their rights and obligations under the transaction documents. Any unauthorized alteration, forgery or falsification of the content or appearance of this document is unlawful and offenders may be prosecuted to the fullest extent of the law.

Unless otherwise stated, the results shown in this test report refer only to the sample(s) tested. This document cannot be reproduced except in full, without prior approval of the Company.



SGS Testing Services Co., Ltd  
Guangzhou Chemical Laboratory

138 Kazhu Road, Sointech Park, Guangzhou Economic & Technology Development District, Guangzhou, China 510663 | (86-20) 82155555 | (86-20) 82075125 | www.cn.sgs.com  
中国·广州·经济技术开发区科学城科珠路198号 邮编: 510663 | (86-20) 82155555 | (86-20) 82075125 | e: sgs.china@sgs.com

Member of the SGS Group (SGS SA)



## Test Report

No.: GZ0904033828/CHEM

Date: APR 30, 2009

Page 3 of 6

### ATTACHMENT:

BLUE 35 BLUE 36 BLUE 78 BLUE 97 BLUE 104 BLUE 7000B BLUE 7090 BLUE 5380E  
BLUE A3R BLUE BGS BLUE B RS05 RS06 RS08 RS10 RS11 RS12 GREEN 3 GREEN 7  
GREEN 28 GREEN 8730 GREEN G VIOLET 13 VIOLET 26 VIOLET28 VIOLET36 VIOLET37 VIOLET RL VIOLET B  
VIOLET RVS ORANGE 60 ORANGE 63 ORANGE 107 ORANGE H4GL(01) ORANGE 2G ORANGE EP  
ORANGE 6RL ORANGE 900 ORANGE GP BLACKR660R BLACK800 BLACK140V BLACK1000# BLACK M100#  
BLACK675# BLACKOBP PRINTEX U BLACK SB6 BLACKA 130BROWN  
610BROWN 660BROWN 645TBROWN MIXTURE

This document is issued by the Company under its General Conditions of Service printed overleaf or available on request and accessible at [http://www.sgs.com/terms\\_and\\_conditions.htm](http://www.sgs.com/terms_and_conditions.htm). Attention is drawn to the limitation of liability, indemnification and jurisdiction issues defined therein. Any holder of this document is advised that information contained hereon reflects the Company's findings at the time of its intervention only and within the limits of Client's instructions, if any. The Company's sole responsibility is to its Client and this document does not generate parties to a transaction from exercising all their rights and obligations under the transaction documents. Any unauthorized alteration, forgery or falsification of the content or appearance of this document is unlawful and offenders may be prosecuted to the fullest extent of the law.  
Unless otherwise stated, the results shown in this test report refer only to the sample(s) tested. This document cannot be reproduced except in full, without prior approval of the Company.



SGS (SGS) Standards Technical Services Co., Ltd  
Guangzhou Special Chemical Laboratory

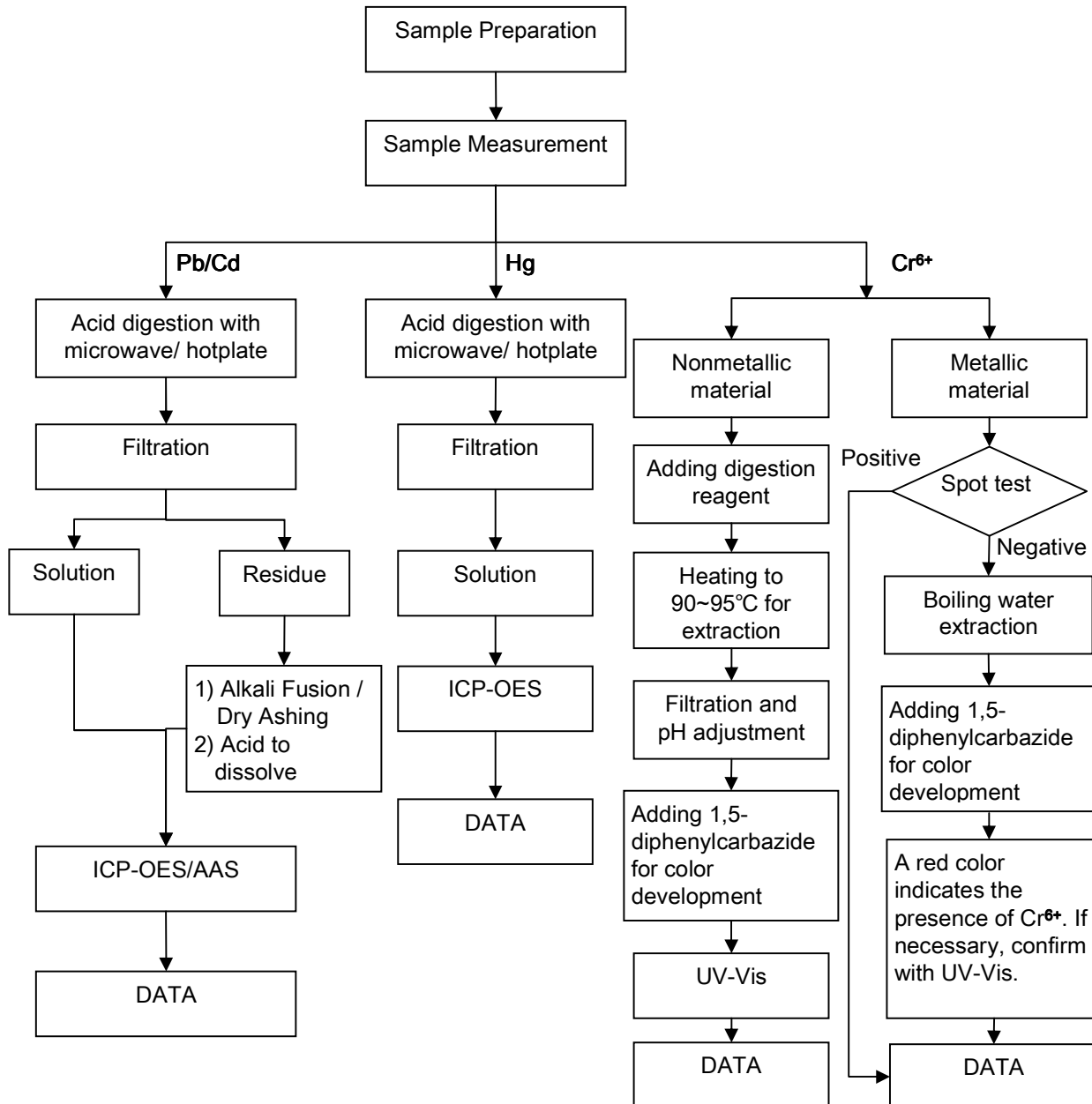
198 Kazhu Road, Sointech Park, Guangzhou Economic & Technology Development District, Guangzhou, China 510663 | (86-20) 82155555 | (86-20) 82075125 | www.cn.sgs.com  
中国·广州·经济技术开发区科学城科珠路198号 邮编: 510663 | (86-20) 82155555 | (86-20) 82075125 | e: sgs.china@sgs.com

Member of the SGS Group (SGS SA)

### ATTACHMENTS

#### Testing Flow Chart

- 1) Name of the person who made measurement: Luke Xu / Lily Lee
- 2) Name of the person in charge of measurement: Adams Yu / Leo Wang
- 3) These samples were dissolved totally by pre-conditioning method according to below flow chart (Cr<sup>6+</sup> test method excluded).



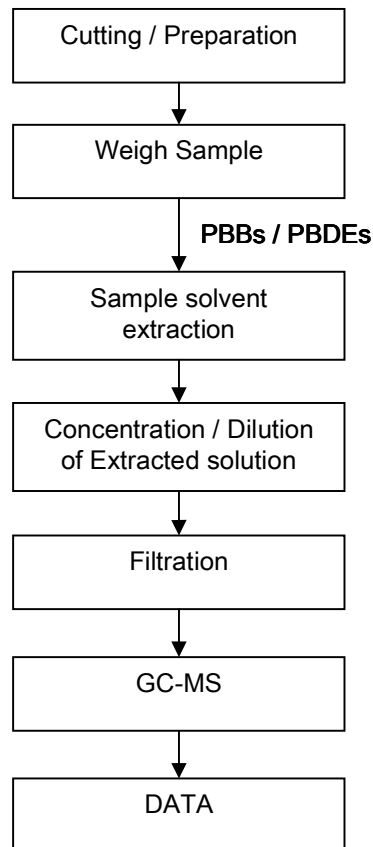
This document is issued by the Company under its General Conditions of Service printed overleaf or available on request and accessible at [http://www.sgs.com/terms\\_and\\_conditions.htm](http://www.sgs.com/terms_and_conditions.htm). Attention is drawn to the limitation of liability, indemnification and jurisdiction issues defined therein. Any holder of this document is advised that information contained hereon reflects the Company's findings at the time of its intervention only and within the limits of Client's instructions, if any. The Company's sole responsibility is to its Client and this document does not generate parties to a transaction from exercising all their rights and obligations under the transaction documents. Any unauthorized alteration, forgery or falsification of the content or appearance of this document is unlawful and offenders may be prosecuted to the fullest extent of the law.

Unless otherwise stated, the results shown in this test report refer only to the sample(s) tested. This document cannot be reproduced except in full, without prior approval of the Company.



### Testing Flow Chart

- 1) Name of the person who made measurement: Lina Tang
- 2) Name of the person in charge of measurement: Tina Zhao

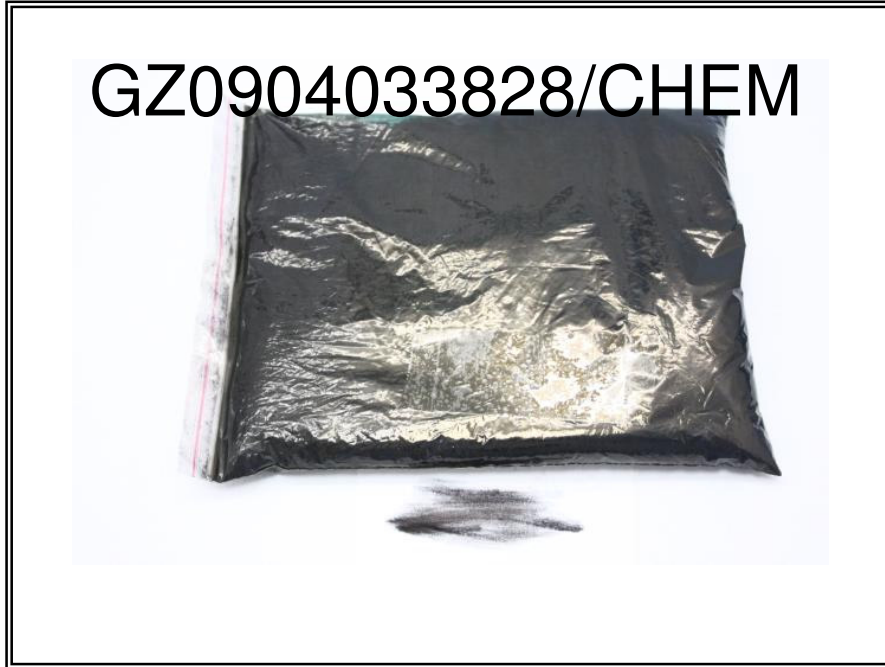


This document is issued by the Company under its General Conditions of Service printed overleaf or available on request and accessible at [http://www.sgs.com/terms\\_and\\_conditions.htm](http://www.sgs.com/terms_and_conditions.htm). Attention is drawn to the limitation of liability, indemnification and jurisdiction issues defined therein. Any holder of this document is advised that information contained hereon reflects the Company's findings at the time of its intervention only and within the limits of Client's instructions, if any. The Company's sole responsibility is to its Client and this document does not generate parties to a transaction from exercising all their rights and obligations under the transaction documents. Any unauthorized alteration, forgery or falsification of the content or appearance of this document is unlawful and offenders may be prosecuted to the fullest extent of the law.

Unless otherwise stated, the results shown in this test report refer only to the sample(s) tested. This document cannot be reproduced except in full, without prior approval of the Company.



Sample photo :



SGS authenticate the photo on original report only

\*\*\* End of Report \*\*\*

This document is issued by the Company under its General Conditions of Service printed overleaf or available on request and accessible at [http://www.sgs.com/terms\\_and\\_conditions.htm](http://www.sgs.com/terms_and_conditions.htm). Attention is drawn to the limitation of liability, indemnification and jurisdiction issues defined therein. Any holder of this document is advised that information contained hereon reflects the Company's findings at the time of its intervention only and within the limits of Client's instructions, if any. The Company's sole responsibility is to its Client and this document does not generate parties to a transaction from exercising all their rights and obligations under the transaction documents. Any unauthorized alteration, forgery or falsification of the content or appearance of this document is unlawful and offenders may be prosecuted to the fullest extent of the law. Unless otherwise stated, the results shown in this test report refer only to the sample(s) tested. This document cannot be reproduced except in full, without prior approval of the Company.

