



Test Report

No.: GZ0904033836/CHEM

Date: APR 25, 2009

Page 1 of 5

SHENZHEN MEIXING CHEMICAL CO., LTD
ROOM502 WEST OF NEW BUS STATION, SONGGANG STREET, BAOAN DISTRICT, SHENZHEN CHINA

The following sample(s) was/were submitted and identified on behalf of the applicant as Plastic Colorist

SGS Job No. : SZ11774843
SGS Internal Reference No. : 32.20
Client Reference Information : OB OB-1 FP-127 KSN KCB RTC-30 RCL-69 RFC-5 HD EBSH38 EBS (SF) EBS (EB-FF) WAX 6A WAX A WAX PE520 WAX 400A H50T SAK-ZS-P UV531 UV770 UV229 UV662 UVP UV81 UV327 UV944 LUMINOUS OIL1000K P209 GOLD5000 GOLD INK GOLD130 GOLD53840 GOLD83841 SILVER200VTS SILVER4175 SILVER7520 SILVER8880 SILVER002 SILVER004 SILVER008 SILVER015 SILVER025 PEARL1100 PEARL1110 PEARL1118 PEARL1181 PEARL1153 PEARL1163 PEARL TI-1000 PEARL300 PEARL302 PEARL303 OK500 OR520 MIXTURE
Buyer : SONY
Date of Sample Received : APR 21, 2009
Testing Period : APR 21, 2009 TO APR 25, 2009
Test Requested : Selected test (s) as requested by client.
Test Method : Please refer to next page(s).
Test Result(s) : Please refer to next page(s).

Signed for and on behalf of
SGS-CSTC Ltd.

Huang Fang, Sunny
Sr. Engineer

This document is issued by the Company under its General Conditions of Service printed overleaf or available on request and accessible at http://www.sgs.com/terms_and_conditions.htm. Attention is drawn to the limitation of liability, indemnification and jurisdiction issues defined therein. Any holder of this document is advised that information contained hereon reflects the Company's findings at the time of its intervention only and within the limits of Client's instructions, if any. The Company's sole responsibility is to its Client and this document does not generate parties to a transaction from exercising all their rights and obligations under the transaction documents. Any unauthorized alteration, forgery or falsification of the content or appearance of this document is unlawful and offenders may be prosecuted to the fullest extent of the law.
Unless otherwise stated, the results shown in this test report refer only to the sample(s) tested. This document cannot be reproduced except in full, without prior approval of the Company.



SGS Standards Technical Services Co., Ltd
Guangzhou Industrial Chemical Laboratory

198 Kazhu Road, Sointech Park, Guangzhou Economic & Technology Development District, Guangzhou, China 510863 | (86-20) 82155555 | (86-20) 82075125 | www.cn.sgs.com
中国·广州·经济技术开发区科学城科珠路198号 邮编: 510863 | (86-20) 82155555 | (86-20) 82075125 | e sgs.china@sgs.com

Member of the SGS Group (SGS SA)



Test Report

No.: GZ0904033836/CHEM

Date: APR 25, 2009

Page 2 of 5

Test Results:

Description for specimen 1 : Offwhite powder

SS-00259

Test Item(s)	Unit	Test Method (Reference)	Result	MDL
Cadmium (Cd)	mg/kg	IEC 62321: 2008, ICP-OES	N.D.	2
Lead (Pb)	mg/kg	IEC 62321: 2008, ICP-OES	N.D.	2
Mercury (Hg)	mg/kg	IEC 62321: 2008, ICP-OES	N.D.	2
Hexavalent Chromium (CrVI) by alkaline extraction	mg/kg	IEC 62321: 2008, UV-Vis	N.D.	2
Sum of PBBs	mg/kg	-	N.D.	-
Monobromobiphenyl	mg/kg	IEC 62321: 2008, GC-MS	N.D.	5
Dibromobiphenyl	mg/kg	IEC 62321: 2008, GC-MS	N.D.	5
Tribromobiphenyl	mg/kg	IEC 62321: 2008, GC-MS	N.D.	5
Tetrabromobiphenyl	mg/kg	IEC 62321: 2008, GC-MS	N.D.	5
Pentabromobiphenyl	mg/kg	IEC 62321: 2008, GC-MS	N.D.	5
Hexabromobiphenyl	mg/kg	IEC 62321: 2008, GC-MS	N.D.	5
Heptabromobiphenyl	mg/kg	IEC 62321: 2008, GC-MS	N.D.	5
Octabromobiphenyl	mg/kg	IEC 62321: 2008, GC-MS	N.D.	5
Nonabromobiphenyl	mg/kg	IEC 62321: 2008, GC-MS	N.D.	5
Decabromobiphenyl	mg/kg	IEC 62321: 2008, GC-MS	N.D.	5
Sum of PBDEs	mg/kg	-	N.D.	-
Monobromodiphenyl ether	mg/kg	IEC 62321: 2008, GC-MS	N.D.	5
Dibromodiphenyl ether	mg/kg	IEC 62321: 2008, GC-MS	N.D.	5
Tribromodiphenyl ether	mg/kg	IEC 62321: 2008, GC-MS	N.D.	5
Tetrabromodiphenyl ether	mg/kg	IEC 62321: 2008, GC-MS	N.D.	5
Pentabromodiphenyl ether	mg/kg	IEC 62321: 2008, GC-MS	N.D.	5
Hexabromodiphenyl ether	mg/kg	IEC 62321: 2008, GC-MS	N.D.	5
Heptabromodiphenyl ether	mg/kg	IEC 62321: 2008, GC-MS	N.D.	5
Octabromodiphenyl ether	mg/kg	IEC 62321: 2008, GC-MS	N.D.	5
Nonabromodiphenyl ether	mg/kg	IEC 62321: 2008, GC-MS	N.D.	5
Decabromodiphenyl ether ##	mg/kg	IEC 62321: 2008, GC-MS	N.D.	5

Note:

1. mg/kg = ppm
2. N.D. = Not Detected (< MDL)
3. MDL = Method Detection Limit
4. ## = The exemption of DecaBDE in polymeric application according 2005/717/EC was overruled by the European Court of Justice by its decision of 01.04.2008. Subsequently DecaBDE is included in the sum of PBDE after 01.07.2008
5. "-" = Not regulated

This document is issued by the Company under its General Conditions of Service printed overleaf or available on request and accessible at http://www.sgs.com/terms_and_conditions.htm. Attention is drawn to the limitation of liability, indemnification and jurisdiction issues defined therein. Any holder of this document is advised that information contained hereon reflects the Company's findings at the time of its intervention only and within the limits of Client's instructions, if any. The Company's sole responsibility is to its Client and this document does not generate parties to a transaction from exercising all their rights and obligations under the transaction documents. Any unauthorized alteration, forgery or falsification of the content or appearance of this document is unlawful and offenders may be prosecuted to the fullest extent of the law.

Unless otherwise stated, the results shown in this test report refer only to the sample(s) tested. This document cannot be reproduced except in full, without prior approval of the Company.



SGS Testing Services Co., Ltd
Guangzhou Chemical Laboratory

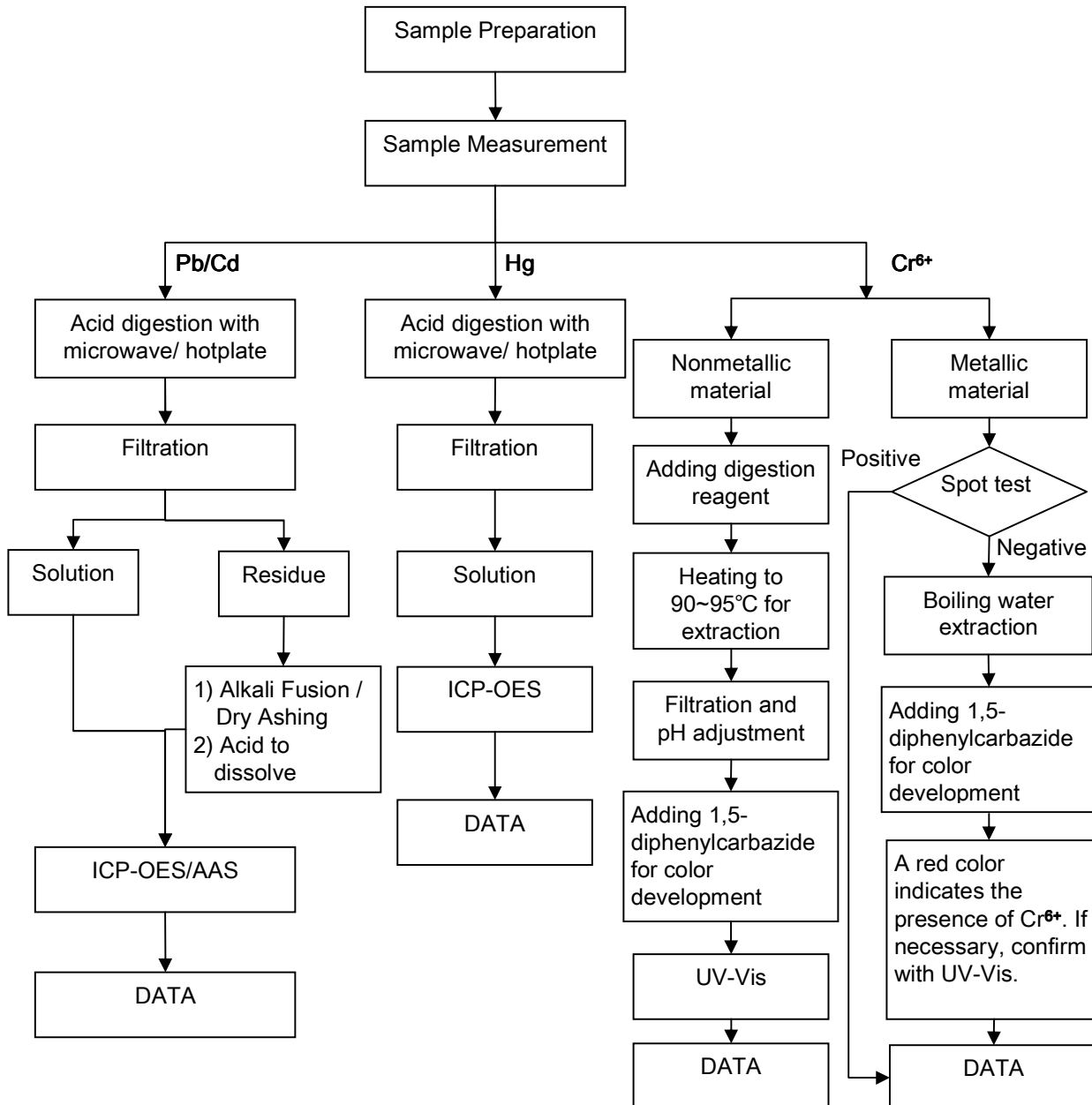
138 Kazhu Road, Sointech Park, Guangzhou Economic & Technology Development District, Guangzhou, China 510663 | (86-20) 82155555 | (86-20) 82075125 | www.cn.sgs.com
中国·广州·经济技术开发区科学城科珠路198号 邮编: 510663 | (86-20) 82155555 | (86-20) 82075125 | e sgs.china@sgs.com

Member of the SGS Group (SGS SA)

ATTACHMENTS

Testing Flow Chart

- 1) Name of the person who made measurement: Luke Xu / Lily Lee
- 2) Name of the person in charge of measurement: Adams Yu / Leo Wang
- 3) These samples were dissolved totally by pre-conditioning method according to below flow chart (Cr⁶⁺ test method excluded).

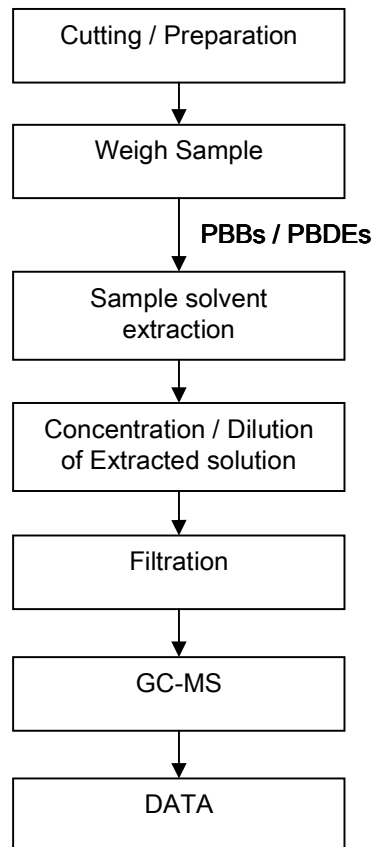


This document is issued by the Company under its General Conditions of Service printed overleaf or available on request and accessible at http://www.sgs.com/terms_and_conditions.htm. Attention is drawn to the limitation of liability, indemnification and jurisdiction issues defined therein. Any holder of this document is advised that information contained herein reflects the Company's findings at the time of its intervention only and within the limits of Client's instructions, if any. The Company's sole responsibility is to its Client and this document does not generate parties to a transaction from exercising all their rights and obligations under the transaction documents. Any unauthorized alteration, forgery or falsification of the content or appearance of this document is unlawful and offenders may be prosecuted to the fullest extent of the law. Unless otherwise stated, the results shown in this test report refer only to the sample(s) tested. This document cannot be reproduced except in full, without prior approval of the Company.



Testing Flow Chart

- 1) Name of the person who made measurement: Lina Tang
- 2) Name of the person in charge of measurement: Tina Zhao

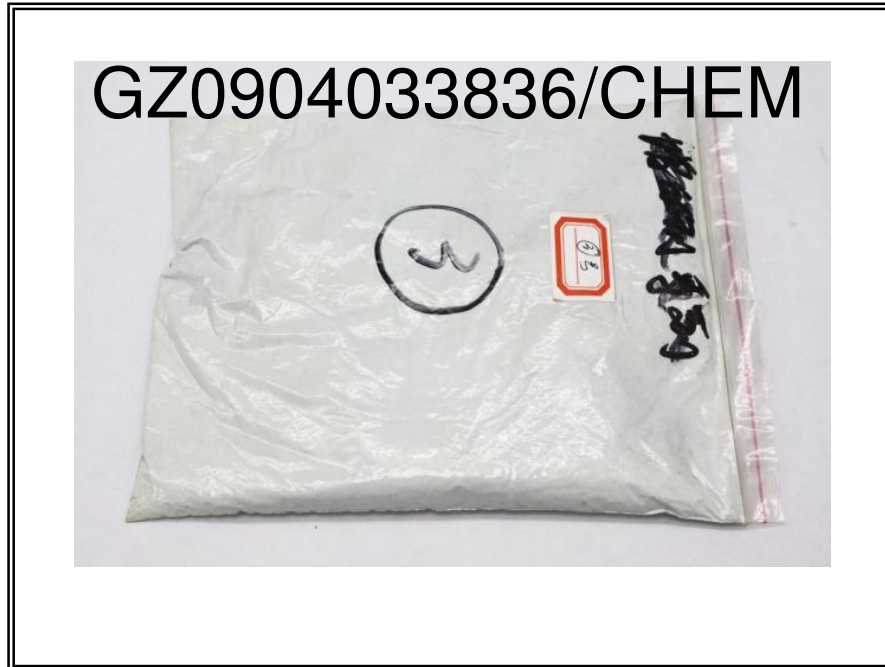


This document is issued by the Company under its General Conditions of Service printed overleaf or available on request and accessible at http://www.sgs.com/terms_and_conditions.htm. Attention is drawn to the limitation of liability, indemnification and jurisdiction issues defined therein. Any holder of this document is advised that information contained hereon reflects the Company's findings at the time of its intervention only and within the limits of Client's instructions, if any. The Company's sole responsibility is to its Client and this document does not generate parties to a transaction from exercising all their rights and obligations under the transaction documents. Any unauthorized alteration, forgery or falsification of the content or appearance of this document is unlawful and offenders may be prosecuted to the fullest extent of the law.

Unless otherwise stated, the results shown in this test report refer only to the sample(s) tested. This document cannot be reproduced except in full, without prior approval of the Company.



Sample photo :



SGS authenticate the photo on original report only

*** End of Report ***

This document is issued by the Company under its General Conditions of Service printed overleaf or available on request and accessible at http://www.sgs.com/terms_and_conditions.htm. Attention is drawn to the limitation of liability, indemnification and jurisdiction issues defined therein. Any holder of this document is advised that information contained hereon reflects the Company's findings at the time of its intervention only and within the limits of Client's instructions, if any. The Company's sole responsibility is to its Client and this document does not generate parties to a transaction from exercising all their rights and obligations under the transaction documents. Any unauthorized alteration, forgery or falsification of the content or appearance of this document is unlawful and offenders may be prosecuted to the fullest extent of the law. Unless otherwise stated, the results shown in this test report refer only to the sample(s) tested. This document cannot be reproduced except in full, without prior approval of the Company.

